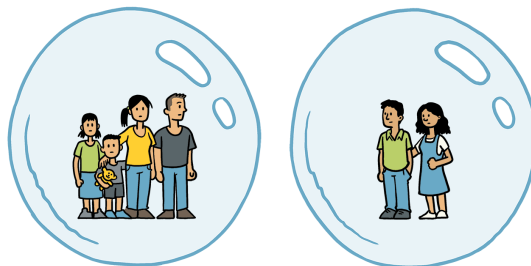




# Fruitvale COVID message

## Returning to level 3, August 12 until...



@SIOUXSIEW @XTOTL thespinoff.co.nz

CC-BY-SA

*Your teacher and child will make contact tomorrow 13 August, starting the digital connection. School staff will watch the news to see what the projected timeline for this period will be. Individualised learning can happen from next week through,*



Seesaw

[showwithmedia.com/interactive-writing/](https://showwithmedia.com/interactive-writing/)

| and Google Classroom.



If you're feeling stressed about the whole learning at home during this second break-out of COVID you could watch this news item. It is taken from a few months ago but is still relevant... where we are now is the, 'later in the year', that the announcer talks about.

<https://www.tvnz.co.nz/shows/seven-sharp/clips/how-to-cope-with-kids-learning-at-home-during-the-lockdown>  
[n](#)

*As we get clearer about what this period of lockdown will look like we will update you about Fruitvale school's response. Until then, I have attached two articles that talk about putting a family plan together so that you and your family are well set up over this period.*

*Stay safe, stay home, please let us know if you are an essential worker needing your child at school over these next few days.*



Nga mihi nui

Donal

Ph/text.. 0211296483