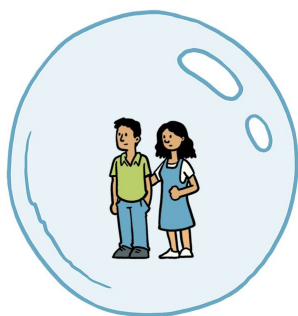




@SIOUXSIEW @XTOTL thespinoff.co.nz



CC-BY-SA

Fruitvale COVID message



Remaining at level 3, August 14 until 26

Your teacher will have made contact with your child and online learning will begin from Monday 17 August through, Seesaw and Google Classroom

If you're feeling stressed about the whole learning at home during this second break-out of COVID you could watch this news item. It is taken from a few months ago but is still relevant... where we are now is the, 'later in the year', that the announcer talks about.

<https://www.tvnz.co.nz/shows/seven-sharp/clips/how-to-cope-with-kids-learning-at-home-during-the-lockdown>
[n](#)

We have canvassed the whole parent community and you have let us know if you are an essential worker needing your child at school over these next two weeks.

We currently have no children of essential workers needing care.

All children will therefore be using online learning. Should any of you require your child be taught at school as an essential worker, please ring me.

We have also asked who needs a computer to access the school learning. We have got all of those names, thank-you.

We will distribute these computers on Monday between 9-3pm from school. It will be done at the drop-off zone and be contactless. We will match the serial number of the computer to the user and their address.

If it is raining it will be from, 'Ruru', classroom(next to the admin). Either way please bring a bag to carry it all in. Many thanks.



This period of lockdown, at L3, will be over very quickly and we do not believe there will be huge disruption to your child's learning. Please be kind to each other over this time and we look forward to your children all being back at Fruitvale on the 27th of August at the latest. This is a Thursday.

Here is a link to a very easy, and simple, and cheap... way to make masks while you are at home. Please remember to observe social distancing and wear a mask when in groups e.g. shopping. <https://www.youtube.com/watch?v=m90G0Lt0qAY>

Please note while we are in lockdown the school will be locked. The taps will be shut off and there will be no staff on site.

Nga mihi nui....

Donal

Ph/text.. 021129648