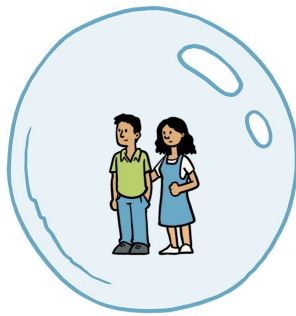




@SIOUXSIEW @XTOTL thespinoff.co.nz



CC-BY-SA

# Fruitvale COVID message

**Life in level 3,  
August 18 until 26**



Your teacher will have made contact with your child and online learning will have begun. We have attempted to equip every child who does not have a device with a device. The last of these have been processed today between 10am and 12pm.

Currently, the government is saying Auckland will not go to L4. We may stay in L3 longer but currently that doesn't look like it will be the case.

While we have all been away building and maintenance work has been going ahead on our site. The new block is very close to completion though opening ceremonies are still planned for the beginning of next term. We had a major drainage repair to do and luckily the fault happened just before we locked down and will be all fixed by the time we return next week.

If you're feeling stressed about the whole learning at home during this second break-out of COVID you could watch this news item. It is taken from a few months ago but is still relevant... where we are now is the, 'later in the year', that the announcer talks about.

<https://www.tvnz.co.nz/shows/seven-sharp/clips/how-to-cope-with-kids-learning-at-home-during-the-lockdown>  
[n](#)

All children are able to use online learning. Should any of you as an essential worker, require your child be taught at school please ring me.



My essential message doesn't change this period of lockdown, at L3, will be over very quickly and we do not believe there will be huge disruption to your child's learning. Please be kind to each other over this time and we look forward to your children all being back at Fruitvale on the 27th of August or very close to that date.

Here is a link to a very easy, and simple, and cheap... way to make masks while you are at home. Please remember to observe social distancing and wear a mask when in groups e.g. shopping.  
<https://www.youtube.com/watch?v=m90G0Lt0qAY>

Link to COVID resources here:

<https://www.unitec.ac.nz/about-us/covid-19-activities-and-online-resources-for-kids>

Please note while we are in lockdown the school will be locked. The taps will be shut off, the playgrounds unusable and there will be no staff on site. Nga mihi nui.... Donal Ph/text.. 0211296483